

SPECIFICATION

Model	Firefly	Firefly Pro
Drone		
Dimension	745x555x252 mm (unfolded); 273x224x107 mm (folded)	745x555x292 mm (unfolded); 273x224x147 mm (folded)
Weight (without payload)	2.4 kg	2.45 kg
Maximum Take-off Weight	3.4 kg	3.45 kg
Payload Capacity	max. 1 kg	
Maximum Ceiling	3500 m	
Wind Resistance	10 m/s (Beaufort 5)	
Working Temperature	-10~+50 °C	
Power Supply	Lithium-polymer battery, 4S, 12000 mAh, 15.2 V, 182.4 Wh	
Flight Endurance	max. 39 min	
Cruising Speed	max. 15 m/s (sport mode)	
Ascending Speed	max. 5 m/s (sport mode)	
Descending Speed	3 m/s	
Hovering Accuracy (P-GPS)	H. ±1.5 m (downward vision: ±0.3 m); V. ±0.5 m (downward vision: ±0.1 m)	
Hovering Accuracy (D-RTK)	/	H. ±0.2 m; V. ±0.1 m
Dual RTK Direction Detection	/	accuracy ±1°
Forward Vision System		
Detecting Range	0.5~15 m	
Suited Environment	obstacles with rich textures & moderate lighting (> 15 lux, normal indoor fluorescent light)	
Downward Vision System		
Tachometer Range	speed ≤ 10 m/s (@AGL 8m, moderate lighting)	
Precise Hovering Range	0.3 ~8 m	
Suited Environment	obstacles with rich textures & moderate lighting (> 15 lux, normal indoor fluorescent light)	
Remote Controller		
Control Frequency	2.4 GHz	
Radio Datalink Range	max. 7 km (with moderate intervisibility)	
Working Temperature	-10~+50 °C	
Power Supply	Lithium battery built in, 5000 mAh, 8.4 V	
Communication Interface	Type-A, USB	
Charger		
Purpose	for drone battery and remote controller both	
Rated Power	68 W	
Voltage	16.8 V	

Note: all information above is subject to change without any prior notice.

FIREFLY PRO PACKAGE

- aircraft unit x1
- backup propeller x4
- landing gear extension x4
- remote controller (RC) x1
- RC tablet holder x1
- drone battery x1
- battery charger x1
- charger cable x1
- front RTK antenna (pre-installed) x1
- drone backpack x1



(Note: take Firefly Pro for example)

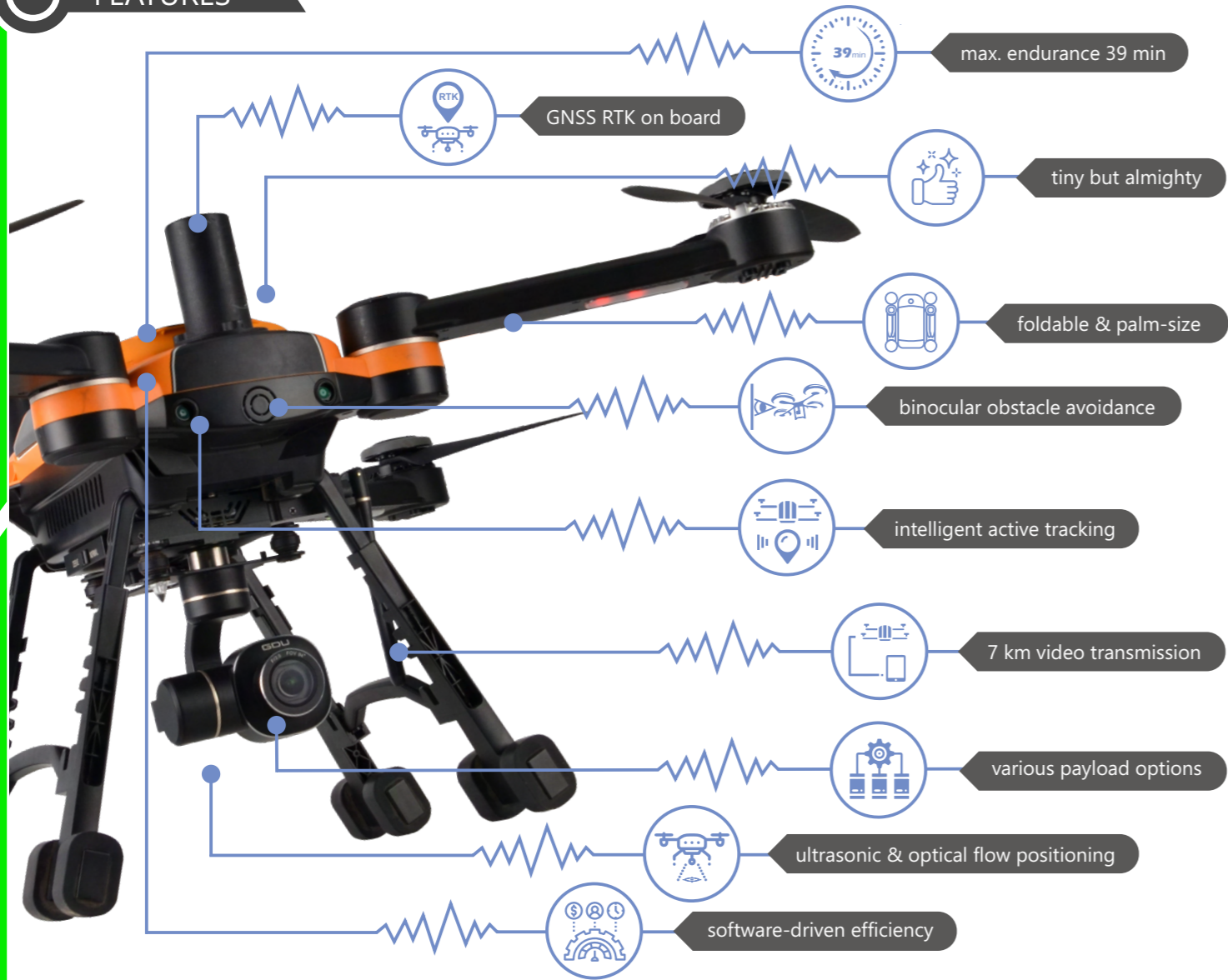
FLY2APP SERIES Firefly / Firefly Pro

Born to Challenge Versatile Applications



dealer info

FEATURES



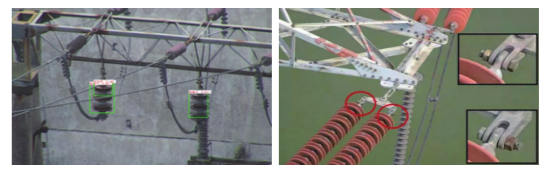
PAYLOADS

<p>4K gimbal camera</p> <ul style="list-style-type: none"> • 3-axis gimbal stabilizer • 249 g, 120x87x110 mm • FOV 94°, F2.8, E24 mm • image 4000X3000, resolution 12.4 MP • video UHD: (4096x2160)(24,30) (3840x2160)(24,30) 2.7K: (2704x2028)(25,30) FHD: (1920x1080)(30,60) HD: (1280x720)(30,60) 	<p>10X(1K) optical zoom camera (30X(1K), 35X(4K) available also)</p> <ul style="list-style-type: none"> • 3-axis gimbal stabilizer • 433 g, 124x84x115 mm • FOV 66.6°(wide)-7.2°(long) • one-key/manual focus, F4.9-49 mm • image 4352x3264, resolution 14 MP • video FHD: 1920x1080 30FPS • exposure compensation ±3 (1EV) • white balance: auto, sunny, cloudy, incandescent 	
<p>thermal infrared camera</p> <ul style="list-style-type: none"> • 3-axis gimbal stabilizer • 470 g, 160x150x154 mm • infrared 800x600, E20 mm, F1.2 • visible 1280x720, E3 mm, F2.2 • infrared/visible picture-in-picture • infrared one-key/slight focus • visible one-key focus • supports single shot, sequence shot, burst shooting, time lapse 	<p>3-in-1 integrated camera</p> <ul style="list-style-type: none"> • visible+infrared+laser • 3-axis gimbal stabilizer • 600 g, 111x126x151 mm • infrared 640x512, E25 mm, F1.13 • one-key/manual focus, F4.9-49 mm • image 4352x3264 • video 1920x1080 30FPS • laser ranging 6-600 m 	
<p>gas detector</p> <p>UAV-based sensors that detect ex gas or toxic gas</p> <ul style="list-style-type: none"> • NO2, SO2 • CO, O3 • H2S, ZH • ZH03B, ZS03 	<p>search light</p>	<p>megaphone</p>

SHOWCASE



Power Lines Inspection



grid device detection grid fault detection

thermal imaging high-temperature inspection



multi-drone with 1 control do more with less



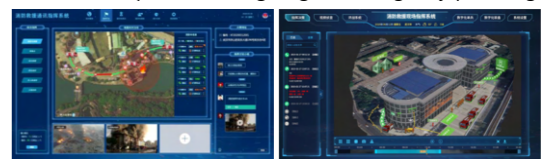
Fire Rescue Operation



visible light to detect flame infrared to detect heat source



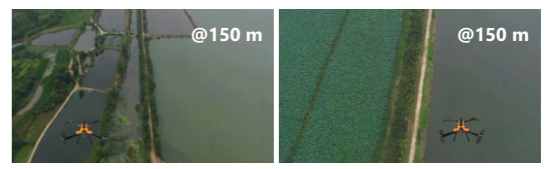
AI-based fire point marking digital emergency planning



smart fire rescue operation command & mobilization



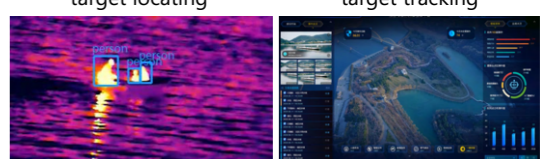
Watercourse Enforcement



4K aerial videography 30X zoom videography



target locating target tracking



illegal fishing/discharge illegal case statistics

PLENTY MORE